







## Intubatt Eco

product sheet no. 400

### Fire and Acoustic Sealing System

#### Features:

-  Sustainable fire stopping
-  Up to 4 hour fire protection
-  Tested to EN standard
-  Helps BREEAM/CSH compliance
-  Halogen free, Zero VOC coating
-  Improved handling



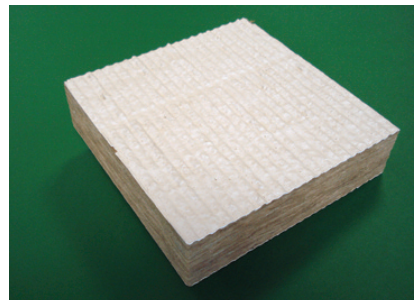
# What is Firetherm Intubatt Eco?

Intubatt Eco provides a cost effective, efficient and sustainable method of firestopping service penetration openings. Used in fire compartment walls and floors around services such as suitably supported air conditioning ducts, pipe work and electrical cabling against the passage of fire and smoke.

Intubatt Eco has been developed using a new halogen free, fibre free flexible coating and ECOSE<sup>®</sup> technology rock fibre slab that uses a revolutionary formaldehyde-free binder technology based on rapidly renewable materials instead of petro-based chemicals. This reduces the embodied energy without compromising fire stopping performance and therefore provides a significant contribution to a buildings overall sustainability.

## Description

Intubatt Eco is a strong pre-engineered ECOSE<sup>®</sup> based rock fibre slab 1200mm x 600mm x 50mm thick pre-coated with flexible Intucoat Eco fire resistant ablative coating under ISO 9001 quality controlled factory conditions to both faces.

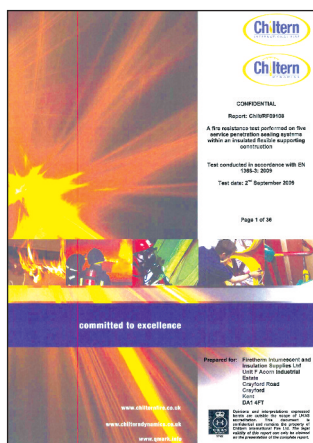


## Application

Intubatt Eco is designed to be an environmentally friendly and efficient method of firestopping service penetration openings through compartment walls and floors. Intubatt Eco boards are simply cut to size using a serrated knife or similar and compression fixed between the services and the opening perimeter. All joints and edges of the fire seal are pointed in using Firetherm Intumastic Eco (tube applied) or Intucoat Eco (brush or trowel applied) sealants.

## Fire Performance

Intubatt Eco has been rigorously tested to BSEN 1366-3:2009 and BS 476: Part 22:1997 at a UKAS accredited laboratory.



## General Performance

Using Firetherm's eco-range will help to achieve environmental targets such as BREEAM and the code for sustainable homes. Fully tested to provide up to four hours fire protection.

## Contract Support

All Firetherm products are supported on site by a dedicated technical support team who are there to advise and help our customers where ever possible—please call +44 (0) 1322 551010.

## Specification Wording

"Install Firetherm Intubatt Eco to provide up to 4 hours fire protection as specified on drawings, fully in accordance with Firetherm designs and instructions. Contact Firetherm Ltd Dartford England 01322 551010".

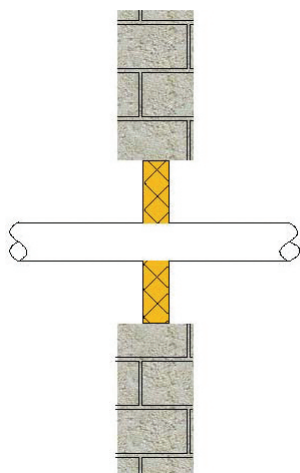
## Packaging

Intubatt Eco are supplied singularly or pallet quantity of 60.

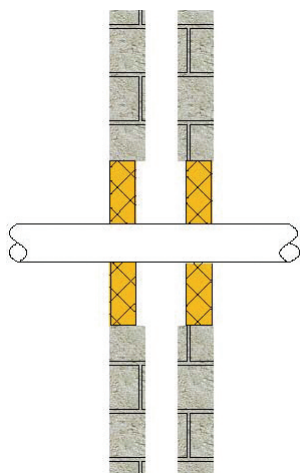
**Contact:** [sales@firetherm.com](mailto:sales@firetherm.com)



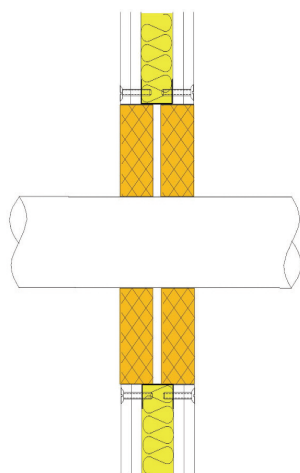
# Installation



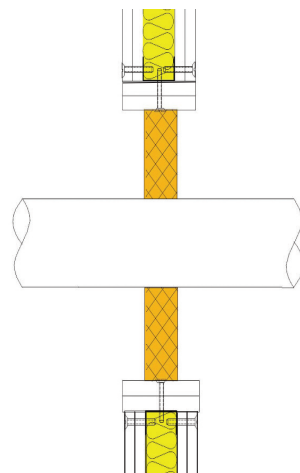
Blockwork single seal



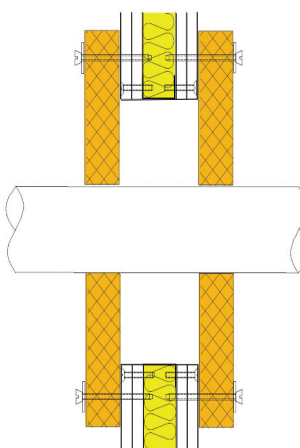
Blockwork double seal



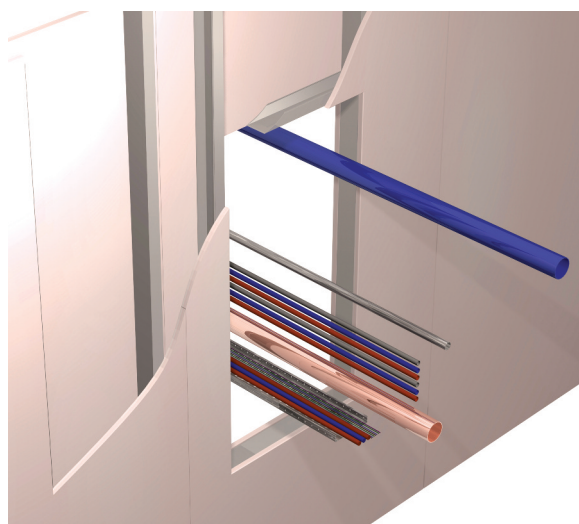
Drywall partition framed opening



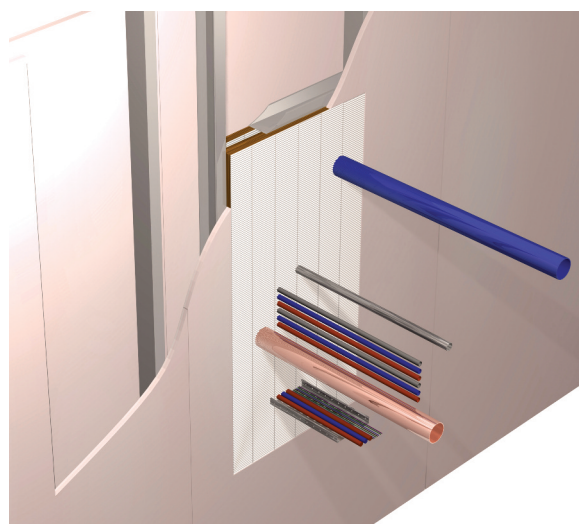
Drywall partition framed and lined opening



Drywall partition surface mounted seal



Service opening



Fire stopped with Intubatt Eco

## Optifire™ Technology

Firetherm's Eco range uses Optifire™ indicator technology which provides assurance and full traceability of the source of the products.

This enables Contractors, Specifiers, Building Control, District Surveyors, Independent Inspectorates and Building owners to identify and confirm that the specified Firetherm product has been used throughout the project by simply applying a laser source to the surface of the product revealing a colour unique to the Eco range .

# Product Safety Data Notes

## Intubatt Eco

### 1) IDENTIFICATION OF PRODUCT AND MANUFACTURER

Product: Intubatt Eco is a high-density mineral fibreboard coated on both faces with Intucoat Eco aqueous acrylic, eco friendly, fibre free non-toxic fire retardant coating.

Company: Firetherm, Unit F, Acorn Industrial Park, Crayford Road, Crayford Kent DA1 4FT, England. Tel: +44 (0) 1322 551010

### 2) COMPOSITION: HAZARDOUS INGREDIENTS

Non-hazardous coating applied to a mineral wool man (machine) made vitreous fibre >18% alkali and earth alkali oxides with up to 7% of cured bonding agent (up to 7% of a cured bonding agent comprising a nitrogen-containing polymer derived from natural products and containing low levels of silane and hydrocarbon oil).

### 3) HAZARD IDENTIFICATION

The fibre may cause temporary (but reversible) skin irritation by mechanical action. Cutting and handling may create dust. High dust levels may irritate the throat or eyes. The bonding agent is unlikely to be hazardous in its cured state.

### 4) FIRST AID MEASURES

**EYES:** If irritation occurs, wash eyes with water.

**SKIN:** If irritation occurs, remove contaminated clothing and wash skin with soap and water.

**INHALATION:** Move person to fresh air

**INGESTION:** Drink plenty of water if accidentally ingested.

If any adverse reaction or discomfort continues from any of the above exposures, seek medical advice.

### 5) FIRE FIGHTING MEASURES

The products do not pose a fire hazard in use; however, some packaging materials may burn.

a) Suitable Extinguishing Media - water, foam, carbon dioxide or dry powder.

b) Media not to be used – none known

c) Products of combustion - carbon dioxide, carbon monoxide and some trace gases such as ammonia, nitrogen oxides.

d) If fire occurs in a warehouse storing the Intubatt Eco prior to use, respiratory protection/ breathing apparatus may be required. Otherwise no special fire-fighting requirements.

### 6) LEAK AND SPILL PROCEDURE

Personal precautions: Avoid contact with skin or eyes. Minimise exposure to dust. See section 8 for recommended personal protection measures.

Method for clean up: Large pieces may be placed in plastic bags or waste bins. Granules or dust should be collected using vacuum cleaning or by damping down with water spray prior to brushing up.

### 7) HANDLING AND STORAGE

Ensure adequate ventilation of workspaces.

Use protective equipment specified in section 8.

Avoid unnecessary handling of unwrapped product. Store in original packaging in a dry place. If cutting the material use sharp hand tools and avoid power tools.

### 8) PERSONAL PROTECTION & EXPOSURE CONTROLS

Refer to specific country regulations and guidance for relevant work place exposure limits.

Respiratory protection: In confined spaces it is recommended that disposable face masks complying with EN149 FFP1 or FFP2 should be used and are suitable for most applications to improve comfort.

Hand protection: Cloth, leather or rubber gloves can be worn to reduce any mechanical irritation affects which may occur.

Eye protection: When working with product above head height, eye protection to BS EN 166 is advised.

Skin protection: Loose fitting clothing is advised, cover exposed skin.

### 9) PHYSICAL DATA

**Appearance:** Vitreous mineral wool slab with white mastic coated facing to faces.

**Solubility:** Very low solubility in water. Product is generally chemically inert. Some leaching of organic binder may occur.

### 10) STABILITY & REACTIVITY DATA

No special physical conditions need to be avoided.

No restrictions regarding incompatible materials.

Decomposition products principally Carbon Dioxide, Carbon Monoxide and some trace gases, in a well ventilated area these trace gases are likely to be below hazardous levels.

### 11) TOXICOLOGICAL

Not classified as a carcinogen under the EU Dangerous Substances Directive 67/548/EEC and Directive 97/69/EC.

No link between exposure to mineral wool fibres and lung disease in production or user industries. IARC Group 3 (not classifiable)

No adverse irritant reaction to skin in dermal patch tests

No chronic effects usually associated with skin or eye contact

### 12) ECOLOGICAL INFORMATION

Inert inorganic product with very small organic content 5 to 7%

Some leaching of organic content may occur if disposed of in landfill < 0.3%

The material is not ecotoxic by composition.

### 13) WASTE DISPOSAL

Dispose of as general waste at an approved waste site suitable for building waste, observing local regulations. European waste catalogue code 17 06 04 Non Hazardous.

### 14) TRANSPORT INFORMATION

Not regulated/ non-hazardous / no special requirements

### 15) REGULATORY INFORMATION

Xi-irritant R38 (irritating to skin)

S36/37 Wear suitable protective clothing and gloves

Fibre covered by Annex 1 entry no 650-016-00-2 –Skin irritant (R38) according to Directives 67/548/EEC, revised by Directive 97/69/EC.

This Material Safety Data Sheet is in accordance with the EU Directives 67/548/EEC, 1999/45/EEC and 91/155/EEC, as amended. 93/112/EC and 2001/58/EC. The classification is that required by EU Directive 97/69/EC

### 16) OTHER INFORMATION

R38 Irritating to the skin.

Further information [www.Eurima.org](http://www.Eurima.org) and [www.Eurisol.com](http://www.Eurisol.com)

This data sheet does not constitute a workplace risk assessment

Conforms to EEC Directive 91/155/EEC



**Firetherm Intumescent & Insulation Supplies Ltd, Unit F, Acorn Industrial Park,  
Crayford Road, Crayford, Kent, DA1 4FT**

**Tel: +44 (0)1322 551010. Fax: +44 (0)1322 552727. Website: [www.firetherm.com](http://www.firetherm.com)**

In presenting this technical advice we cannot claim to serve in any but an advisory capacity and cannot undertake liability since actual conditions of use are beyond our control.  
Our Standard Terms & Conditions Apply At All Times