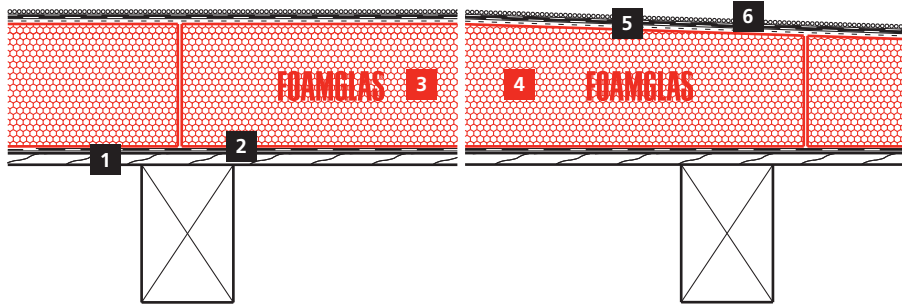


Compact Flat Roof without service access or protective layer on timber substrate

FOAMGLAS® slabs with hot bitumen

Schematic drawing



System 4.1.6

- 1 Timber substrate/multilayer composite board
- 2 Separating layer nailed on or self-adhesive layer
- 3 FOAMGLAS® slabs or
- 4 FOAMGLAS® TAPERED slabs, laid in hot bitumen
- 5 Top coat of hot bitumen
- 6 Two layers of bituminous waterproofing membranes, top layer UV-resistant

FOAMGLAS® product properties

Waterproof – Resistant to vermin – High compressive strength –
Non-combustible – Impervious to water vapour – Dimensionally stable –
Acid resistant – Easily cut to shape – Ecological

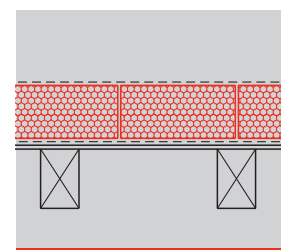
Advantages of the FOAMGLAS® system

- **Quality:** Systems with high quality materials. Quality management by systematic site inspections and professional consulting.
- **Cost efficiency:** The high durability preserves maximum value and guarantees minimal maintenance costs.
- **Sustainability:** Optimum insulation and protection against moisture for generations.
- **Safety:** Compact, fully bonded insulation system preventing large-scale damages and renovations in the event of a leak caused by a puncture of the roofing membrane. No penetrations by mechanical fastening. No risk of condensate due to air leakage.
- **Functionality:** Insulation and vapour barrier in one single functional layer. Flexible and easy installation of a gradient through prefabricated tapered slabs.

Recommendations for architects

- Normally used: FOAMGLAS® slabs T4+ or FOAMGLAS® TAPERED T4+, size 450/600 mm.
- Insulation thickness to meet building regulations or project-specific U-value requirements. Please also consult our product overview. It contains information on all our products, their field of application and their specific properties.
- **The flatness and the general conditions of the substrate are important criteria when using FOAMGLAS® (see TG1). Please contact our Technical Department to verify the criteria for the substrate.**
- **For technically correct implementation, relevant standards and guidelines must be observed.**

Solutions for technical details and specification clauses on request. Further proposals and solutions are available any time from our technical consultants. **Updated: November 2010.** We explicitly reserve the right to change the technical specifications. The current values can be found on our website under: www.foamglas.co.uk/building/applications



Compact Flat Roof without service access or protective layer on timber substrate

FOAMGLAS® slabs with hot bitumen

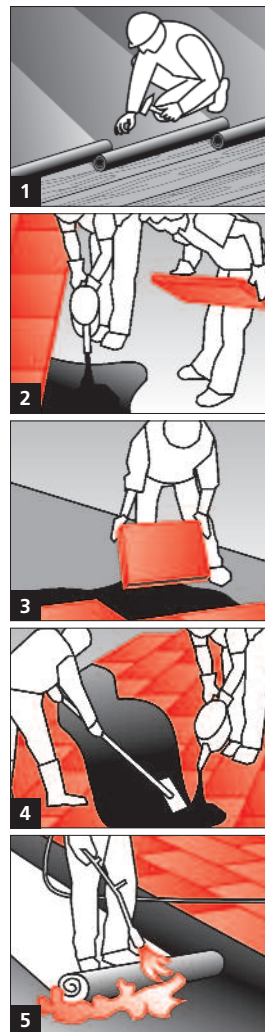
System 4.1.6

Installation instructions

- For timber decks: Apply loosely laid bituminous separating layer using friction-locked nailing to the substrate, with joints overlapped and bonded. (1)
- For multilayer composite boards: Apply a bituminous self-adhesive layer (appropriate product on request), with joints overlapped and bonded, or a bitumen resistant tape on the boards.
- Apply the FOAMGLAS® slabs fully bonded to the substrate with hot bitumen poured from a bitumen can, with staggered and bitumen-filled butted joints. Coverage $\sim 5.0\text{--}7.0\text{ kg/m}^2$, dependent on the thickness of the insulation: Dip a short as well as a long side of the slab in the poured bitumen and press into position against already laid slabs. Surplus bitumen spilt at the side must be removed with the next slab in order to avoid irregularities. (2/3)
- Top coat of hot bitumen, coverage $\sim 2.0\text{ kg/m}^2$. Pour the hot bitumen and spread with the rubber spreader on the FOAMGLAS® surface. (4)
- Possible waterproofing variation: Apply two layers of bituminous waterproofing membranes covering the entire surface. First and second layer are torched on. Joints overlapping at least 100 mm, with staggered courses. Top layer of UV-resistant bituminous waterproofing membrane. (Further installation and waterproofing proposals with bituminous membranes or, for example, also with a combination of bituminous and synthetic membranes are available on request). (5)

Recommendations for the contractor

- The build up and tolerances of the substrate have to be in accordance with relevant standards and guidelines.
- Substrate and ambient temperature should not be below $+5^\circ\text{C}$.
- A layer of waterproofing membrane must be applied immediately after the insulation has been installed. At the end of each day or every work interruption, all remaining naked surfaces as well as the front sides must be covered with a top coat.
- Adequate measures should be taken in order to avoid any risks of damage by other contractors during construction.
- Protect sensitive components provided by other suppliers against blobs of hot bitumen and the effect of heat
- **Please contact our technical consultants; they can help you by providing support or on-site assistance free of charge.**



The technical guidelines for the application and the installation of FOAMGLAS® are based on historical experience and general site practice. They do not reflect individual examples. We therefore assume no liability as to the completeness and the suitability for a specific project. Furthermore, our liability and responsibility are subject to our general conditions of sale which are not extended either by this technical data sheet nor by the consulting of our technical sales representatives.

**Pittsburgh Corning
(United Kingdom) Limited**
 63 Milford Road, Reading
 Berkshire RG1 8LG
 Phone +44 (0)118 950 0655
 Fax +44 (0)118 950 9019
 info@foamglas.co.uk