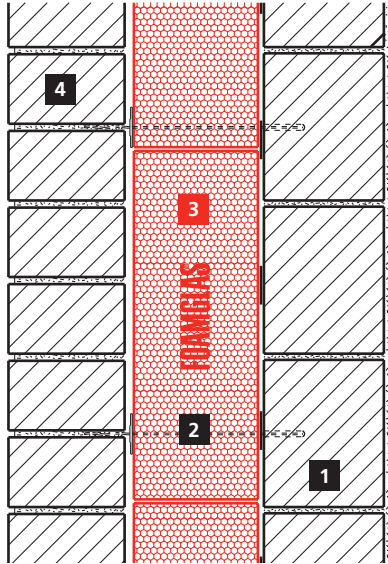


Schematic drawing



System 2.3.1

- 1 Interior wall (brickwork / concrete)
- 2 Wall tie and retaining clip
- 3 FOAMGLAS® WALL BOARD, bonded with PC® 56
- 4 Outer wall (brickwork)

FOAMGLAS® product properties

Waterproof – Resistant to vermin – High compressive strength –
Non-combustible – Impervious to water vapour – Dimensionally stable –
Acid resistant – Easily cut to shape – Ecological

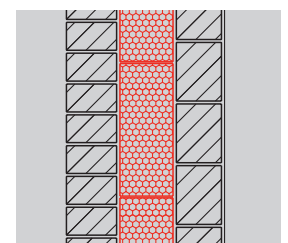
Advantages of the FOAMGLAS® system

- **Quality:** Systems with high quality materials. Quality management by systematic site inspections and professional consulting.
- **Cost efficiency:** The high durability preserves maximum value and guarantees minimal maintenance costs.
- **Sustainability:** Optimum insulation and protection against moisture for generations.
- **Safety:** Compact, fully bonded insulation system preventing damages caused by damp either through condensate or water penetration.
- **Functionality:** Insulation and moisture barrier in one single functional layer.

Recommendations for architects

- Normally used: FOAMGLAS® WALL BOARD W+F, size 600/1200 mm.
- Insulation thickness to meet building regulations or project specific U-value requirements. Please also consult our product overview. It contains information on all our products, their field of application and their specific properties.
- **The flatness and the general conditions of the substrate are important criteria when using FOAMGLAS® (see TG1). Please contact our Technical Department to verify the criteria for the substrate.**
- **For a technically correct implementation, relevant standards and guidelines must be observed.**

Solutions for technical details and specification clauses on request. Further proposals and solutions are available any time from our technical consultants. **Updated: November 2010.** We explicitly reserve the right to change the technical specifications. The current values can be found on our website under: www.foamglas.co.uk/building/applications



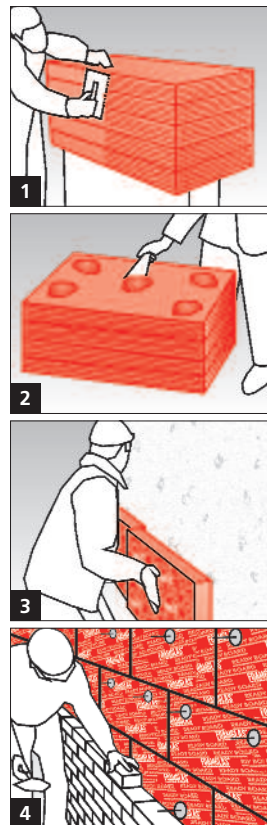
System 2.3.1

Installation instructions

- Apply FOAMGLAS® WALL BOARD spot-bonded with staggered and tight-butted joints filled with cold adhesive PC® 56. Coverage ~ 3.0 kg/m². (1/2/3)
- Fixing aid and mechanical fastening of the FOAMGLAS® slabs in the base area and at lintels (e. g. support bracket).
- Fix the walling anchors to the substrate. Type and number of walling anchors depending on the type of walling, the substrate and the structural requirements.
- Seal the FOAMGLAS® penetrations with cold adhesive PC® 56 or PITTSEAL® 444.
- Construct the external wall of brickwork. (4)

Recommendations for the contractor

- The build up and tolerances of the substrate must be in accordance with relevant standards and guidelines.
- Substrate and ambient temperature should not be below +5° C.
- The joints of the top layer of the last course must be protected against driving rain in order to prevent water penetration or washing out of the cold adhesive.
- Protect sensitive components provided by other suppliers against blobs of adhesive.
- **Please contact our technical consultants; they can help you by providing support or on-site assistance free of charge.**



The technical guidelines for the application and the installation of FOAMGLAS® are based on historical experience and general site practice. They do not reflect individual examples. We therefore assume no liability as to the completeness and the suitability for a specific project. Furthermore, our liability and responsibility are subject to our general conditions of sale which are not extended either by this technical data sheet nor by the consulting of our technical sales representatives.

**Pittsburgh Corning
(United Kingdom) Limited**
63 Milford Road, Reading
Berkshire RG1 8LG
Phone +44 (0)118 950 0655
Fax +44 (0)118 950 9019
info@foamglas.co.uk